



PROASSIST

© 2014 INGENIUM Praha

PROASSIST

3rd generation

Dispatch jobs in real time

Use digital mapping software

Preselect nearest workers automatically

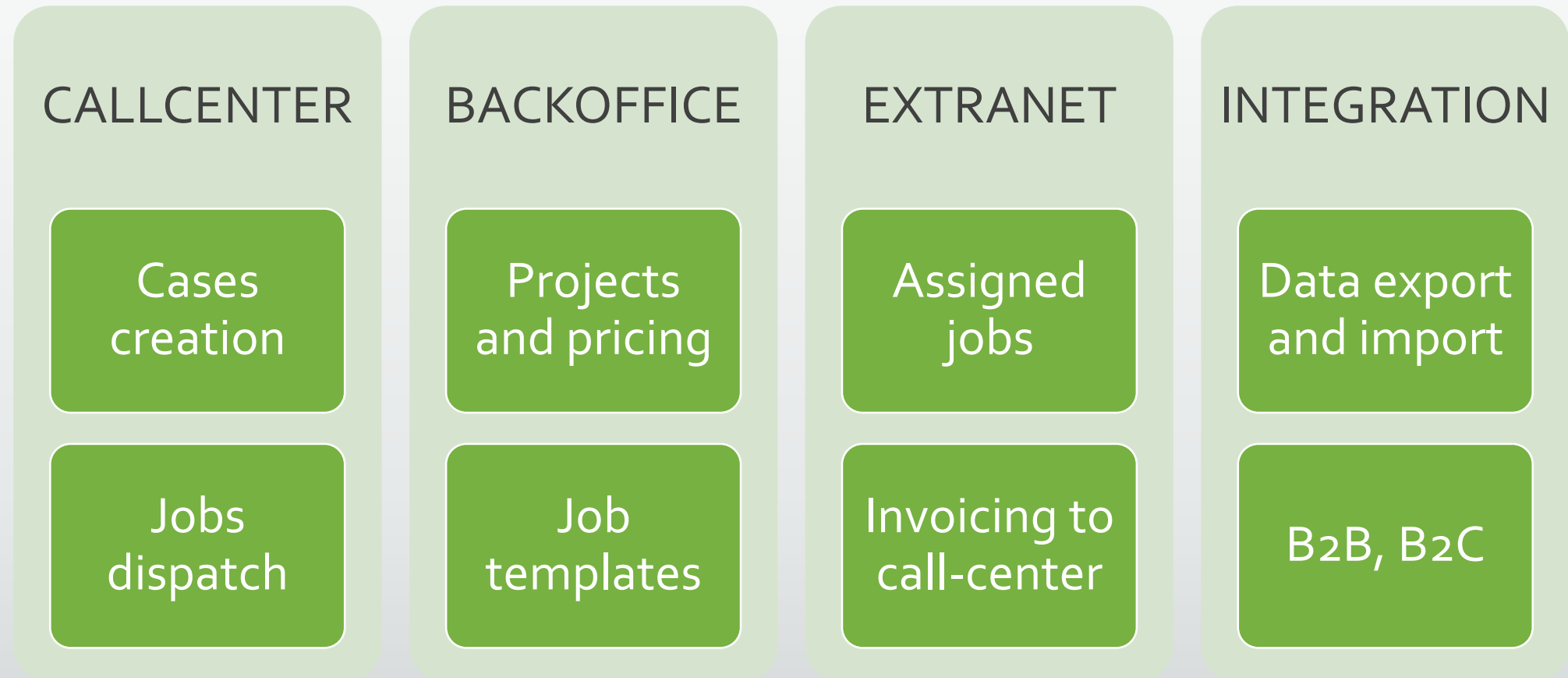
Track job progress

All-in-one solution

Objectives

- Enable straightforward and configurable job dispatching
 - Mobile workforce management
 - Assistance call-centers of any kind
 - Taxi services, delivery services, logistics
- Automate repetitive tasks, avoid user mistakes
- Validate clients using your databases (policy number lookup, VIN code lookup, ...)
- Track history of important events
- Easily integrate with 3rd party systems using data import/export

PROASSIST structure



The daily routine

- Accept incoming requests from clients
- Create new cases, validate client's policy numbers
- Create specific jobs in case using configurable templates
- Find nearest worker for job, validate routes, compute distances
- Communicate with worker via SMS, email, mobile app
- Client first: control the case processing, check for late arrivals, track progress on map
- Compute the price of the job, distinguish between covered price and total price
- Import photos, generate documents
- Export invoicing data to accounting software

Configuration

- Projects and price books
 - Various case types
 - CSV import price book data
- Job templates
 - Per case type
 - Specify individual working steps in job
- Document templates
 - Use tokenized MS Word documents as templates
- Users management
 - Specify user group (operators, back-office, administrators)

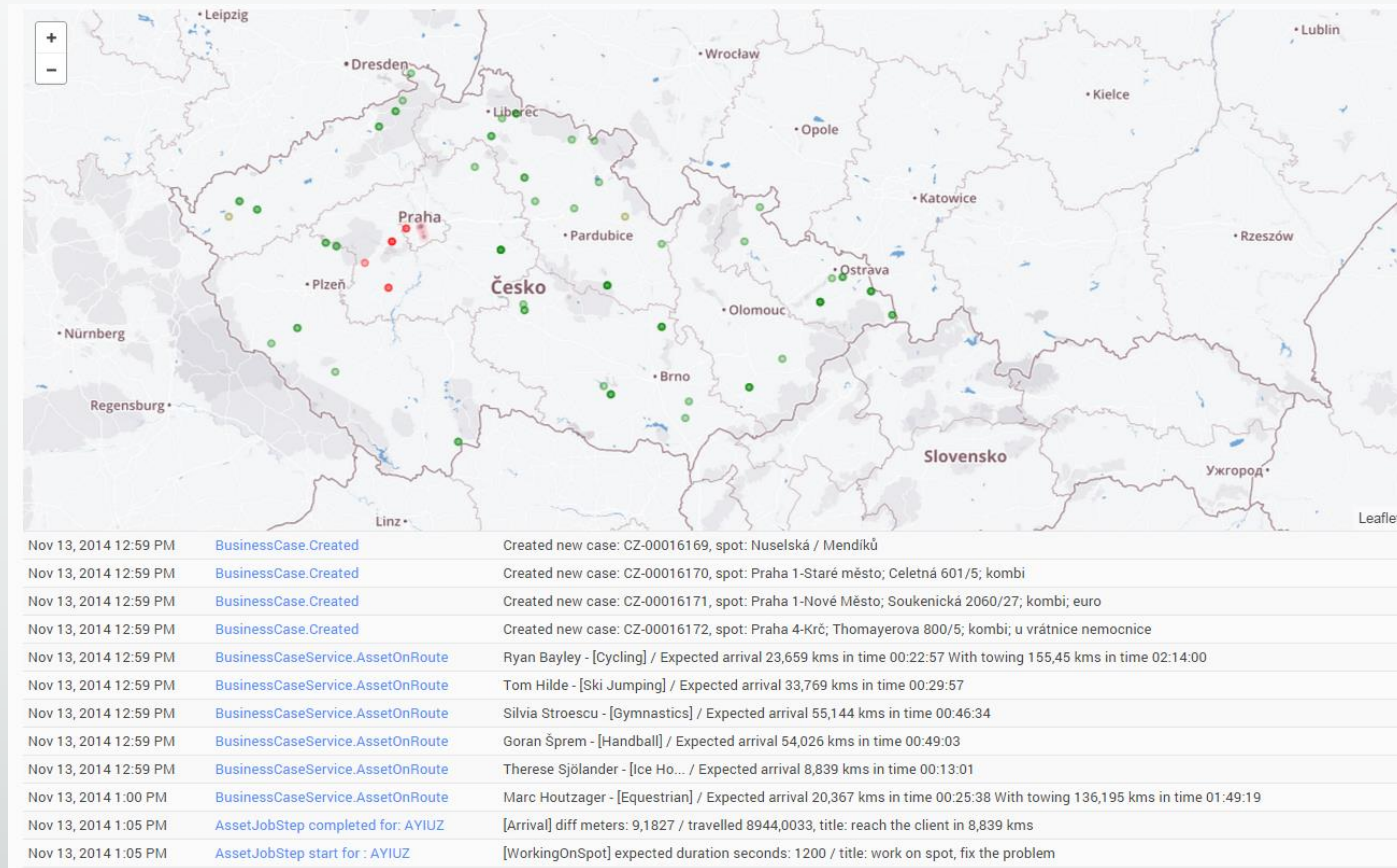
Your workers network

- Companies
 - Basic company details
 - Addresses with geocoding
 - Configured branches, case types, job types
 - Configured vehicles, job types

Case processing

- Enter client details
- Set project, validate client
- Enter vehicle details
- Geocode client location
- Geocode final destination of the case
- Visualize route on map

Running simulation, self-testing



Job processing

- Add job to case
- Select job template
- Find nearest worker automatically
- Refuse worker (e.g. unreachable, has other work already)
- Confirm worker to job
- Send SMS to worker or client
- Track event times, job progress, visualize on map
- Enter invoicing and materials
- Mark job as done = close the job

Job processing – manual assignment

- Create another job in the same case
- Select job template
- Manually search for worker
- Compute routes and visualize routes
- Confirm worker to job
- Cancel the job or set as useless (50% invoicing)

Documents in case

- Upload photos
- Upload generic documents
- Create document based on template

Additional case processing

- Allow user to enter notes
- Track business events
- Allow user to cancel case if all jobs in case are cancelled
- Close the case if all contained jobs are closed

Reporting

- What reports do we need?
 - Count of cases per project
 - Count of cases per country, vehicle type
 - Count of jobs per job type
 - Job costs
 - Workers reliability – refused jobs, late arrivals, ...
- http interface to collect data about cases & jobs

Integrations

- Telephony
- SMS gateway
- GPS data providers
- Data import and export

FINANCIALS

Incoming invoices

Issued invoices

Integrate with accounting software using custom bridge

Invoicing

- Export data in CSV format
- Enable http interface to collect the data
- Use buy & sell pricings [?]
- Compute provision orders [?]
- GOP handling vs. sell price books

COMING UP...

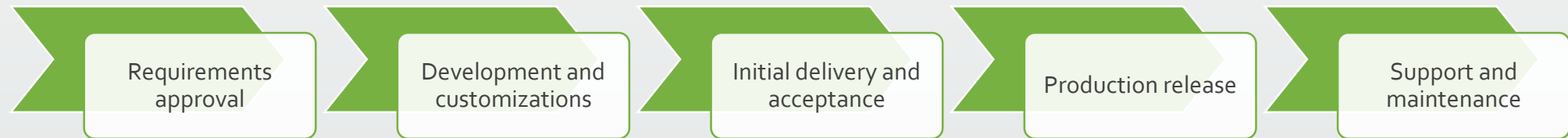
Mobile app for iPhone + Android + Windows Phone

Pass the job to mobile worker

Leverage real-time location of workers

Create jobs directly on mobile app, offer as platform to workers

Project life cycle



Delivery of the software

- Software as a service (SaaS)
- Hosted on our servers, data backups included
- Secured HTTPS access
- Accessible via web browser from anywhere

GOT QUESTIONS? 😊

pavel.weiss@ingenium.cz

+420 603 475 349

<http://www.ingenium.cz>